



**BNP PARIBAS
FOUNDATION**

**“The well-being of people
around the world, the health of
our planet, and the survival of
future generations depend on our
willingness to come together
around a commitment to collective
problem-solving and action.”**

ANTÓNIO GUTERRES

UNITED NATIONS SECRETARY GENERAL


SPEECH TO THE UN GENERAL ASSEMBLY, 10TH FEBRUARY 2022

SUMMARY


Corporate philanthropy actions of the BNP Paribas Swiss Foundation focus on 3 major axes: Social, Cultural and Environmental.



**BNP PARIBAS
FOUNDATION**




SOCIAL AXIS
Promoting education and social inclusion



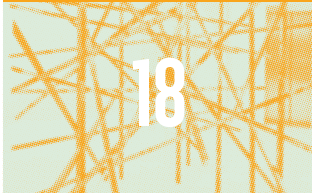
ENVIRONMENTAL AXIS
Supporting research and awareness-raising on climate change



CULTURAL AXIS
Promoting museums' heritage in an innovative way and encouraging young artists



THE COLLECTION
Promoting young Swiss artists



BNP PARIBAS SWISS FOUNDATION

Created in 2002, the BNP Paribas Swiss Foundation has assigned itself the task of promoting dialogue between the bank and its surrounding environment, on issues that are as much cultural, as they are social and environmental.

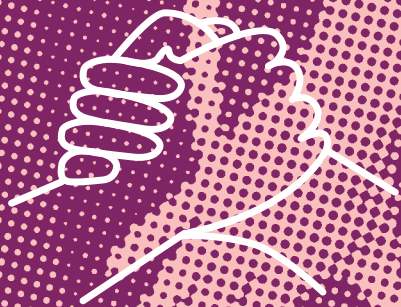
Today, the BNP Paribas Swiss Foundation is considered an eloquent example of corporate philanthropy, in line with the actions undertaken for over almost forty years by the Group Foundation.

The BNP Paribas Swiss Foundation is as committed to building awareness on the wealth of Swiss museums, to encouraging young artists and performers, to supporting projects in favour of education and social inclusion, as it is to supporting research and awareness-raising on climate change.

The Foundation governance consists of a Foundation Board chaired by the Head of Territory of BNP Paribas (Suisse) SA and of a Secretariat supervised by the Managing Director of the Foundation.

The independence of the Foundation Board is a priority and is ensured by the presence of at least one external member.

The BNP Paribas Swiss Foundation thus serves as a vector for the values of the BNP Paribas Group, around which it strengthens a sense of company belonging while opening up new horizons for the bank and its employees.



SOCIAL AXIS

PROMOTING EDUCATION AND SOCIAL INCLUSION

Since its creation, the BNP Paribas Swiss Foundation supports projects that aim to address all forms of social exclusion, whether they affect the aged, people with disabilities, migrants or teenagers with learning difficulties.

Education, equal opportunities and encouragement of the younger generation remains a key for a fair and sustainable development.

These issues concern us all. Therefore, the Foundation encourages bank employees to get involved in the community by actively supporting solidarity initiatives in which they take part outside their professional lives.



Help2Help

The Foundation's "Help2Help" programme aims to encourage initiatives of general interest and support for the most destitute, in which bank employees are personally engaged, outside of their professional lives. Since 2004, bank employees in Switzerland have been involved in more than 200 solidarity projects backed by the Foundation.



"1h per m²: a student under my roof"

Launched in 2016, in partnership with the association Pro Senectute and the University of Geneva, this initiative is aimed at strengthening intergenerational bonding and tackling social isolation of senior citizens, while facilitating student accommodation in Geneva. The project "1h per m²: a student under my roof" provides the exchange of a room for a few hours of help and assistance through inter-generational cohabiting. Every year, about 70 tandems between senior people and students are formed.





Swiss Open, the wheelchair tennis tournament

Since 2014, the Foundation supports the “Swiss Open Geneva”, one of the best reputed wheelchair tennis competitions in the world. During the tournament, some of the world’s best players and amateurs alike meet, while more than 100 volunteers are involved throughout the tournament. Every year several dozen bank employees volunteer to help in the organisation and running of the event.



Opportunity

For more than 30 years, réalise has developed an innovative “hands-on” training model based on a close relationship to economic and companies’ needs. It enables job seekers who lack the diplomas or skills required by employers to enter the labour market effectively. In 2019, the Foundation and réalise jointly launched the “Opportunity, Training today for tomorrow’s jobs” programme, with the objective of spreading this training model throughout Switzerland for

sectors linked with tomorrow’s sustainable and digital economy. The first Opportunity centres have opened in 2021 in the Canton of Zurich and Vaud, already training more than 30 people to become web developers.

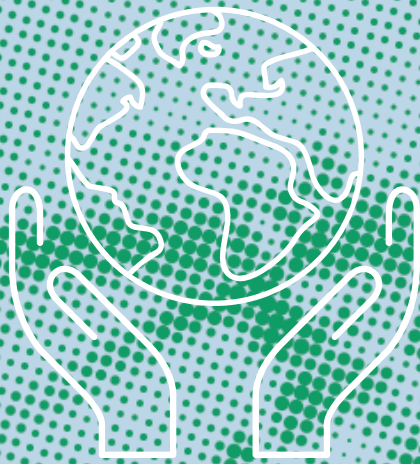


Yojoa

Yojoa proposes a solution for the economic inclusion of young refugees between the ages of 16 and 25. The programme allows them to undertake internships in companies and assists them in developing their career plans. Based on a holistic approach, Yojoa maximizes the chances of these young people to gain access to learning and employment and thus become productive and self-reliant citizens.

Every year Yojoa supports around 30 young refugees in their training and employment journeys.





ENVIRONMENTAL AXIS

SUPPORTING RESEARCH AND AWARENESS-RAISING ON CLIMATE CHANGE

The Group's Foundation is actively engaged in favour of environmental research via the programme Climate and Biodiversity Initiative. Since 2010, several projects run by research laboratories of an international scope have been supported for a total of 18 million euros. The Group's objective is to understand the causes and impacts of global warming in order to anticipate the consequences on our environment and on worldwide populations.

It's within this context that the BNP Paribas Swiss Foundation took a new turn in 2016 and decided to extend its activities to environmental philanthropy.



The Swiss Polar Institute

The Swiss Polar Institute (SPI) is a foundation created by a consortium of Swiss universities that supports Swiss research in polar and remote high-altitude regions by enhancing opportunities, promoting collaborations and providing key services.

The first major project of the Institute was an international scientific expedition to do a complete tour of the Antarctic continent: the Antarctic Circumnavigation Expedition (ACE). In 2016-2017, the BNP Paribas Swiss Foundation supported two projects carried out during ACE, concerned with “investigating air-sea interactions” (Heini Wernli, ETH Zürich) and “analysing why the ocean has become less salty” (Katherine C. Leonard, EPFL).

Since 2017, the BNP Paribas Swiss Foundation supports the “Polar Access Fund” created in collaboration with the Swiss Polar Institute. This fund allows junior researchers from Swiss universities to apply for grants of up to 20'000 CHF in order to carry out field work in polar regions with a focus on climate change related research.



Swiss Food Academy

Swiss Food Academy (SFA) was founded in 2017 in Geneva with the main mission to raise awareness about healthy and sustainable food. The association gathers specialists in nutrition, education, health and sustainable development to develop high value-added content for schools, public authorities, individuals and professionals.

Since 2022, the Foundation supports the development of the “Paprika – my school committed to healthy and sustainable nutrition” programme in Zurich. This educational project aims at promoting a healthy and sustainable diet amongst 8 to 12 years old schoolchildren in the Zurich area by empowering them through pedagogical and playful methods.



ENVIRONMENTAL AXIS



CULTURAL AXIS

PROMOTING MUSEUMS' HERITAGE IN AN INNOVATIVE WAY AND ENCOURAGING YOUNG ARTISTS

For the last few years, the Foundation has participated in cultural mediation programmes that promote an enlarged access to Swiss museums and their heritage, particularly with the use of new technologies and digitalisation.

The Foundation also actively supports young Swiss artists establishing themselves on the art scene or experimenting with new artistic directions, both in visual arts and in the field of dance.

LabElysée

Living worksite in the heart of Photo Elysée in Lausanne, one of the most important museums entirely dedicated to the photographic medium inaugurating its brand new building in June 2022, LabElysée is an area dedicated to the experimentation of digital culture. It questions the part institutions dedicated to photography play in the digitalization context of society and invites visitors, at the museum and online, to participate in the elaboration process of tomorrow photography museum.



Haus Konstruktiv

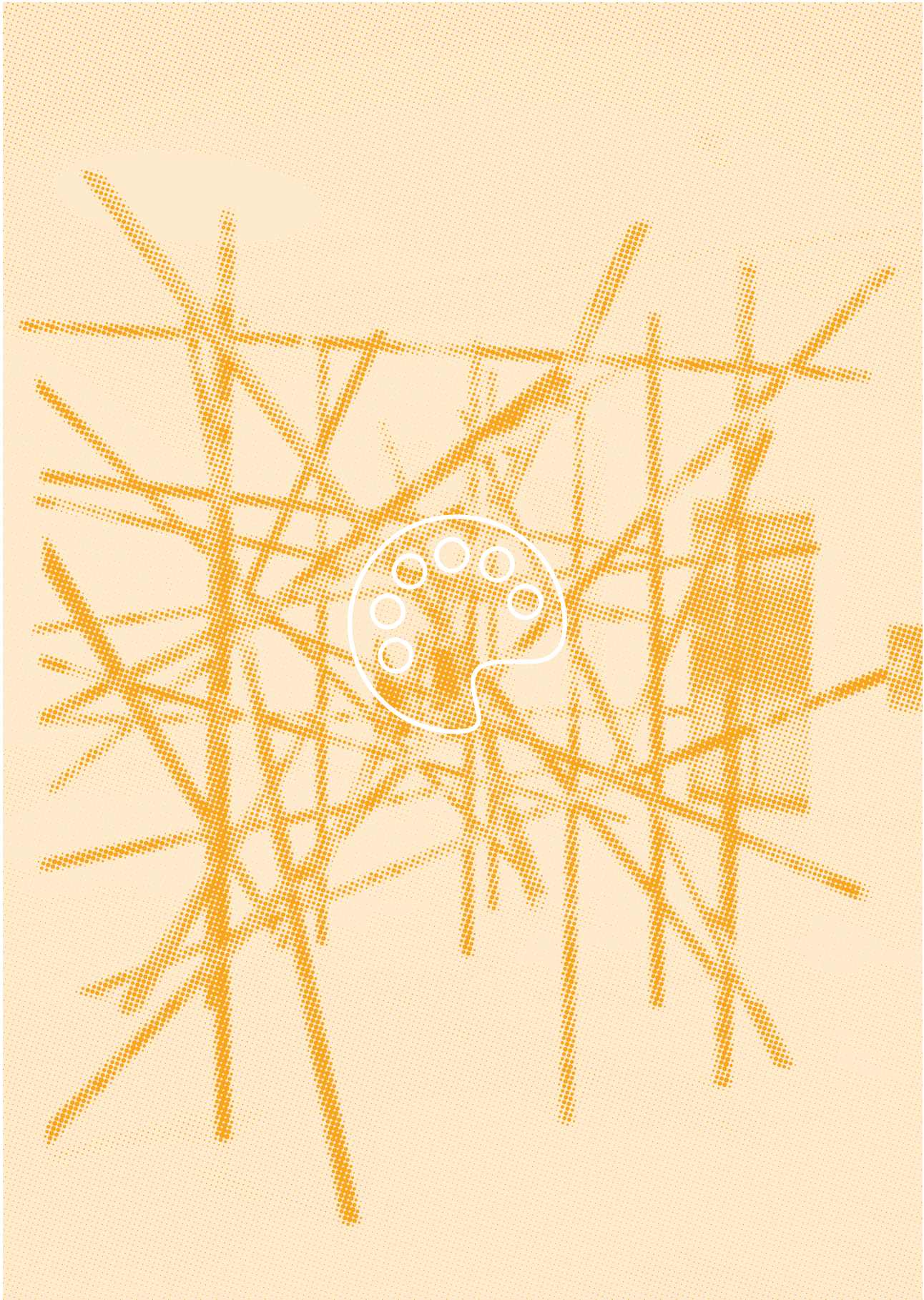
Museum Haus Konstruktiv is a leading institution for constructivist-concrete, and conceptual art in Switzerland, and is highly regarded internationally. Its task is it to keep this art-historical heritage alive and to link it to contemporary art. Every year, the Foundation supports a young Swiss artist's exhibition, either personal or part of a collective exhibit, in the annual programme of the museum, as well as its digital promotion.



The Field

The BNP Paribas Swiss Foundation supports Swiss theatre arts by cofounding “The Field”, an independent dance collective working as associated artist at Tanzhaus Zürich. The group consists of local and international dancers-choreographers, of different ages and careers, who create their own performances while also collaborating with various renowned choreographers. The collective also offers various activities that focus on dissemination and knowledge exchange.





THE COLLECTION

THE BNP PARIBAS SWISS FOUNDATION'S ART COLLECTION

The Art Collection was created in the 1960s and enhanced in the 1980s by a significant acquisition phase that continues today.

The Collection is articulated around Modern European Art (Max Ernst, Joan Miró, Niki de Saint Phalle, Arman, etc.) and Swiss art specifically (Max Bill, Le Corbusier, Louis Soutter, etc.).

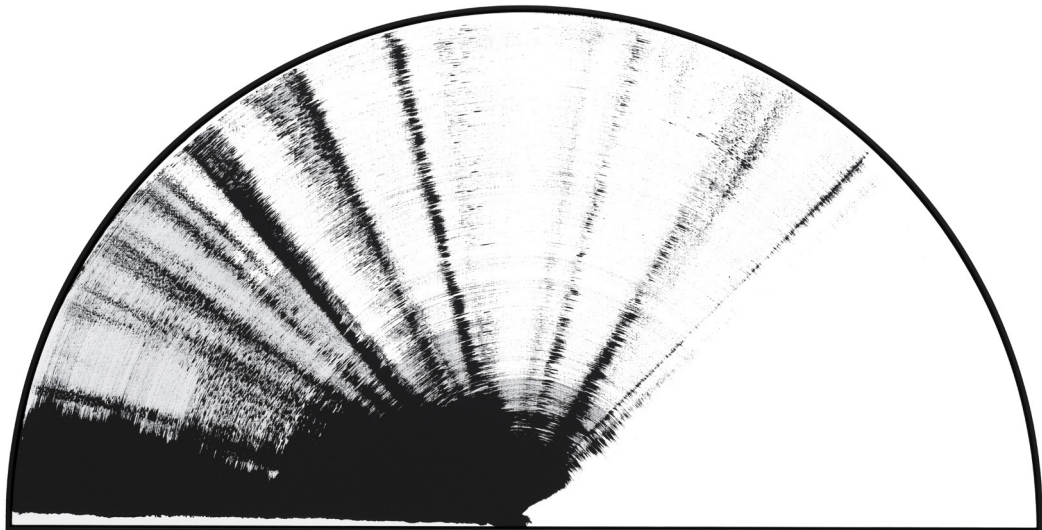
Works from the Collection are presented mostly in the entrance halls and client's reception lounges of BNP Paribas sites in Switzerland. The Collection is the reflection of the bank's identity, not only for its employees, but also for its clients and visitors, thanks to the quality and diversity of the works that compose it.



A dialogue with the Swiss cultural scene

The Foundation's interest in art and the cultural sector is equally demonstrated through the partnerships built with institutional actors, particularly with major Swiss museums. Some of the Collection's art works are granted on loan, for example for exhibitions. This way, appreciation and knowledge of the Collection is spread beyond the confines of the bank alone.

In a desire to invigorate and expand the Collection, the Foundation has also chosen to favour the acquisition of works from contemporary Swiss artists, like Claudia Comte, Sébastien Mettraux and Aurélie Pétreil. Indeed, this support of young artistic creation is perfectly in line with the philanthropic values endorsed by the Foundation since its creation.



Claudia Comte, *Half-Circle Painting, Black & White #9*, 2017





Max Ernst, *Festin suite*, 1974



Partners of the Foundation

**PRO
SENECTUTE**
GENÈVE



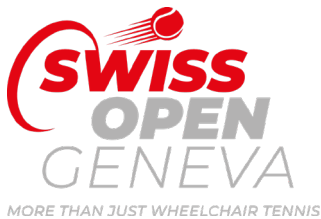
**UNIVERSITÉ
DE GENÈVE**

réalise



**PHOTO
ELYSEE**

Swiss F()d
Academy



**SWISS POLAR
INSTITUTE**

TANZHAUS ZÜRICH



Contact

BNP Paribas Swiss Foundation

Place de Hollande 2

CH - 1204 Genève

swiss.fondation@bnpparibas.com

For additional information on the
BNP Paribas Swiss Foundation:

www.bnpparibas.ch



Marco Scorti, *450-530 m.s.l.m.*, 2016 (détail) / Aurélie Pétreil, *Axionométrie*, 2017 / Yann Gross, *Milagros, Mucha Vista, Pérou*, 2013

BNP Paribas Swiss Foundation

- April 2022 edition -

Editorial

BNP Paribas Swiss Foundation

Design and creation

Company Engagement / BNP Paribas (Suisse) SA

Photo Credits

(Cover) Company Engagement BNP Paribas (Suisse) SA, photos by
Nicolas Righetti, ©Tanzhaus Zürich Helen Ree, Iain Staniland. (p.4) Nicolas Righetti.

(p.6-7) ©1h par m2 Niels Ackermann, Nicolas Righetti.

(p.8) ©réalise Kathelijne Reijse Sallet. (p.10) EPFL. (p.12) Parafilms and EPFL.

(p.13) ©Swiss Food Academy. (p.14) ©Tanzhaus Zürich Helen Ree.

(p.16-17) Yannick Luthy, ©Haus Konstruktiv Bettina Diel, ©Tanzhaus Zürich Helen Ree and
Company Engagement BNP Paribas (Suisse) SA.

(p.18) Aurélie Pétreil. (p.21 and 23) Ivan P. Siméon.

Print

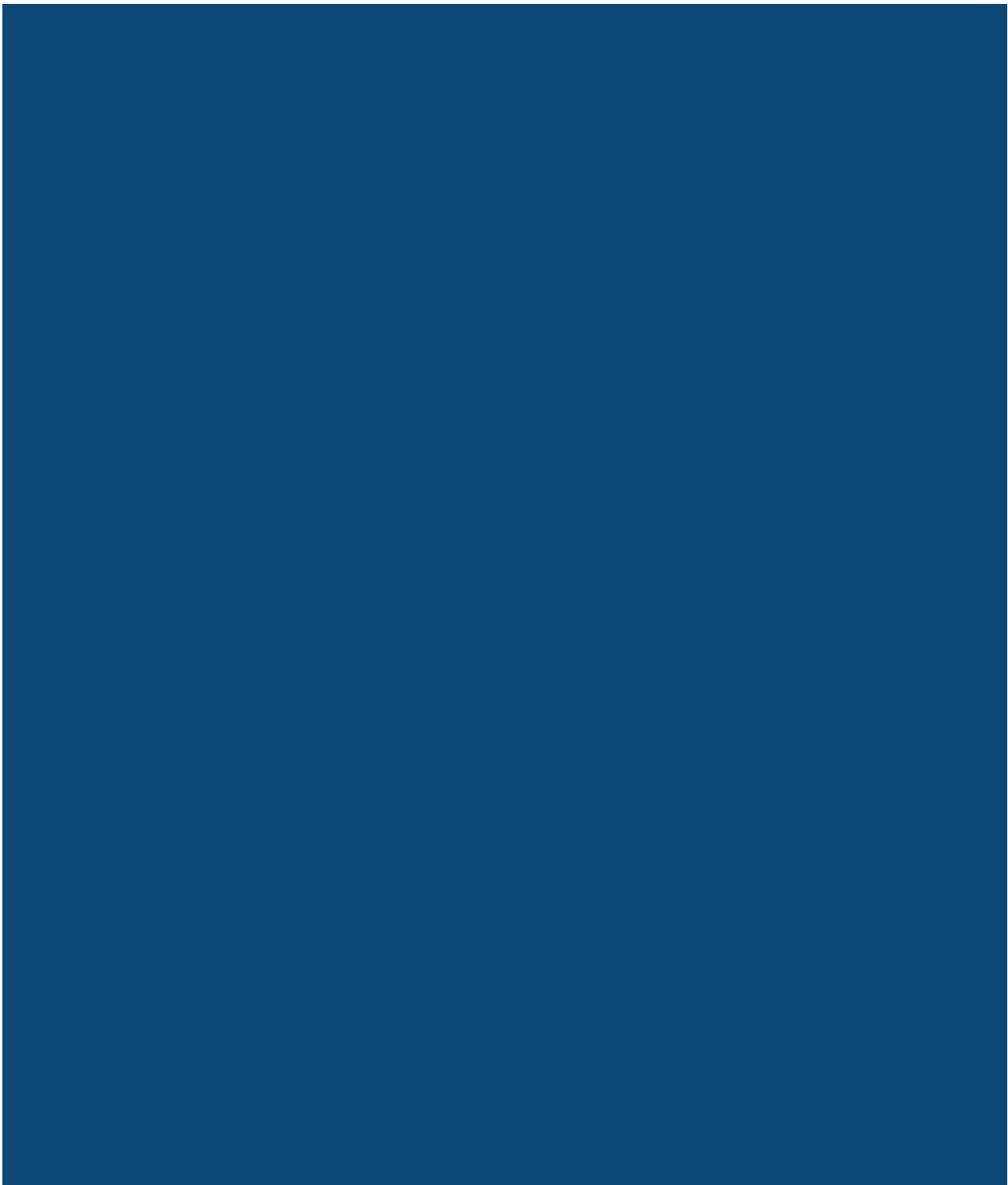
BNP Paribas (Suisse) SA



Paper from
responsible sources



**BNP PARIBAS
FOUNDATION**



**BNP PARIBAS
FOUNDATION**